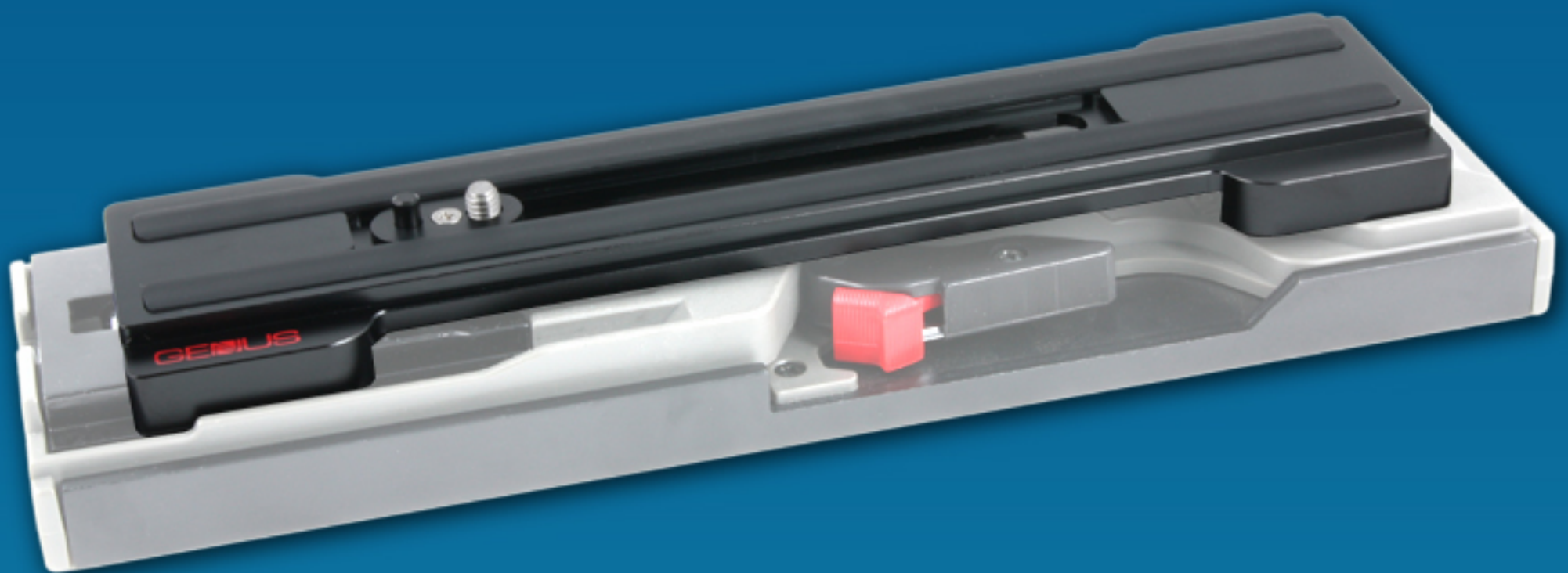




GAP

DV to ENG Adaptor Plate

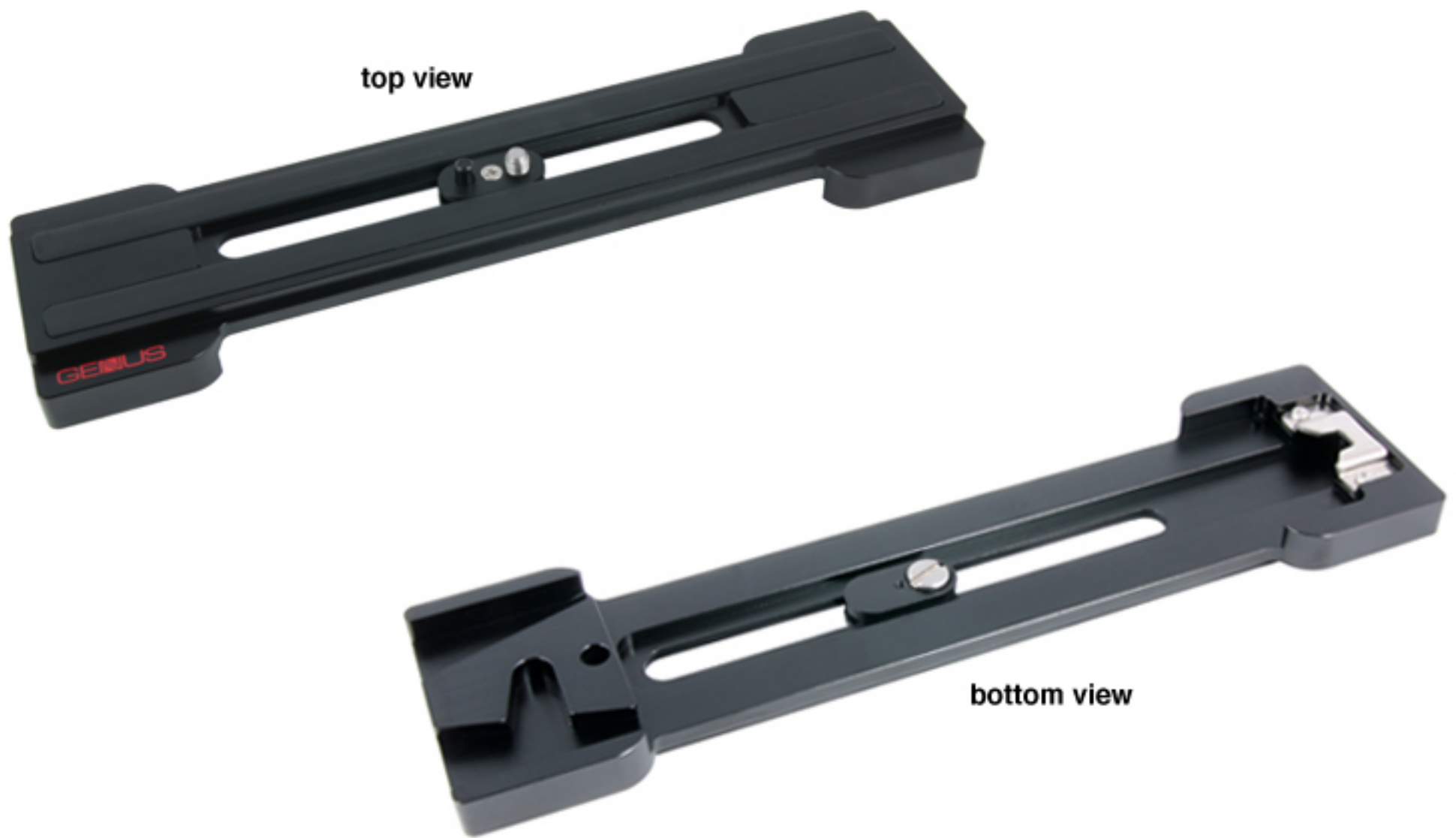
The GAP adaptor plate easily docks onto a Sony V-mount camera base plate with just one click, allowing you to convert from ENG to professional in seconds



“The best I have used so far. Really solid and a great price”

Philip Bloom
Leading Cinematographer and Blogger
<http://philipbloom.co.uk>

GENIUS



Features

- Stream-lined Body
- Solid Construction
- Rubber Strips to Prevent Slipping
- Sliding Camera Mount Screw with Locating Pin
- V-Mount Attachment
- Secure Locking Mechanism
- Light-weight
- Clicks into a V-Mount Plate with Ease
- Easy Release from V-Mount Plate

Specifications

Size (L x W x H) :	245mm x 65mm x 15mm
Weight :	270 gms
Main Body Construction :	Aluminium

Make the jump from Broadcast to Professional quickly and without fuss