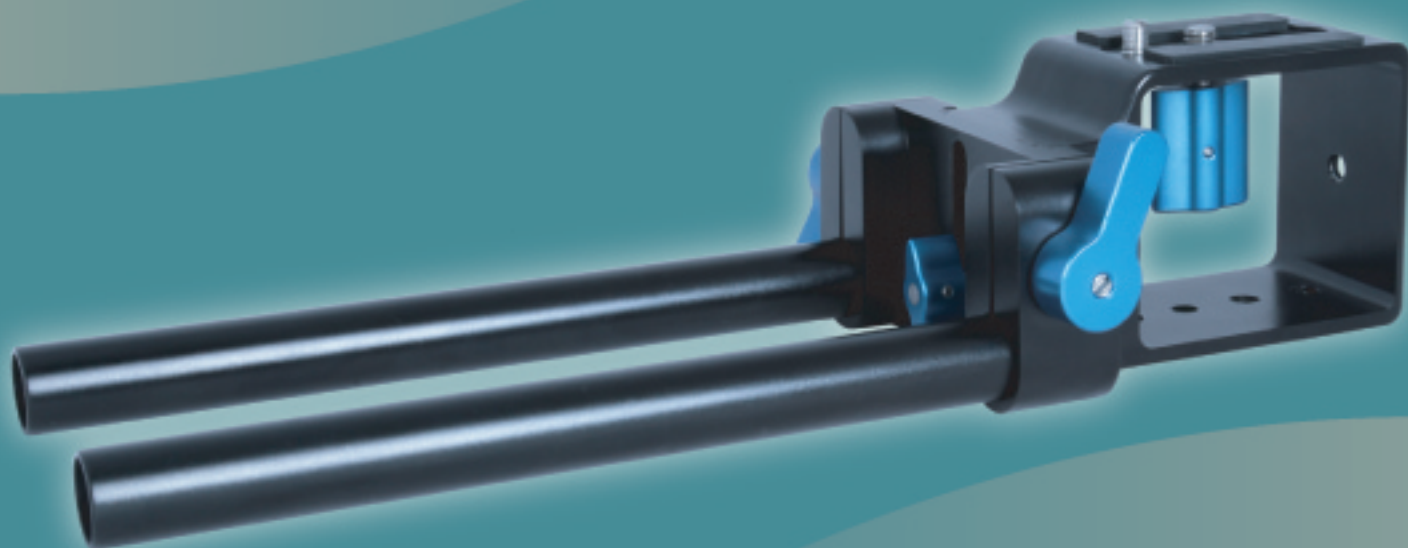


Shown: Genus GMMC Matte Box and French Flag with GMB/DSLRL Adaptor Bar System on Canon 5D Mark II camera and Beachtek DXA-50 audio adaptor



## **GMB/DSLRL** Adaptor Bar System for DSLR Cameras

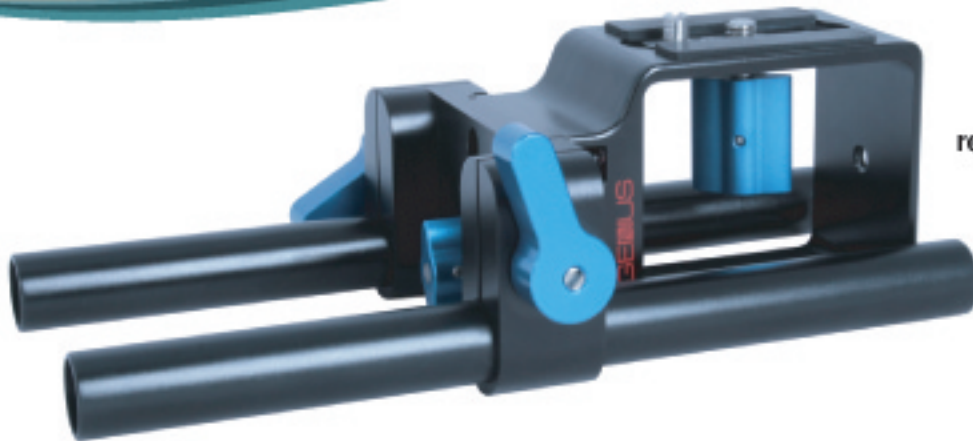
The GMB/DSLRL was designed with the DSLR camera market in mind. Suitable for most DSLR cameras, the GMB/DSLRL offers a higher "seat" to accommodate different cameras and optional add-ons, such as audio adaptors. The GMB/DSLRL can be maneuvered horizontally and vertically to give you perfect alignment with your matte box and lens, just with a twist of a knob.



*"The GMB/DSLRL bars are great for rapid height adjustment; every DSLR camera I've tried can fit on them with no tools needed for adjustment - fit and finish is beautiful too. They already have a permanent home in my gadget bag."*

Dan Chung  
Leading DSLR Filmmaker and Award-winning Photographer  
<http://www.guardian.co.uk/profile/danchung>

**GENUS**



retracts to a compact size



easy grip turn knobs

## Features

- High base plate to accommodate the addition of external accessories to your camera
- Variable positioning with vertical and horizontal brace for perfect alignment
- Retracts to a compact size when not in use
- Easy-grip turn knobs that tighten and loosen gently
- Non-slip rubber strips on the backplate prevents movement and damage to your camcorder
- Bars will fit any 15mm matte box support bar system
- Bars can be elongated by attaching extra bars into the specially designed threaded cores

## Specifications

Length (body only)	:	95mm
Compact Length	:	170mm
Full Length (with bars)	:	245mm
Weight (body only)	:	255 gms
Weight (with bars)	:	347 gms
Main Body Construction	:	Aluminium



versatile positioning braces for perfect fit